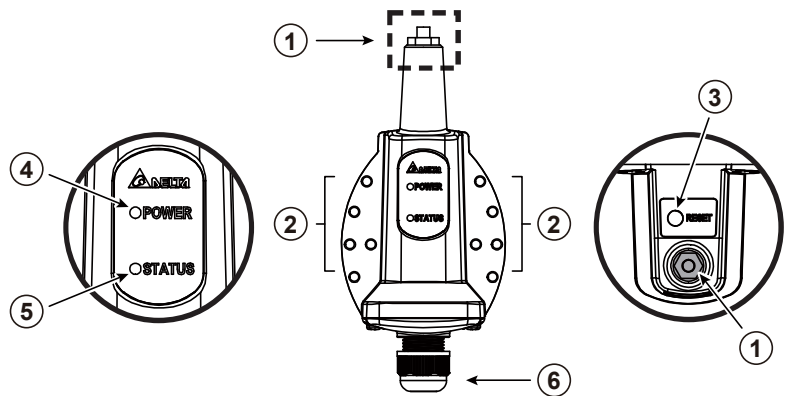


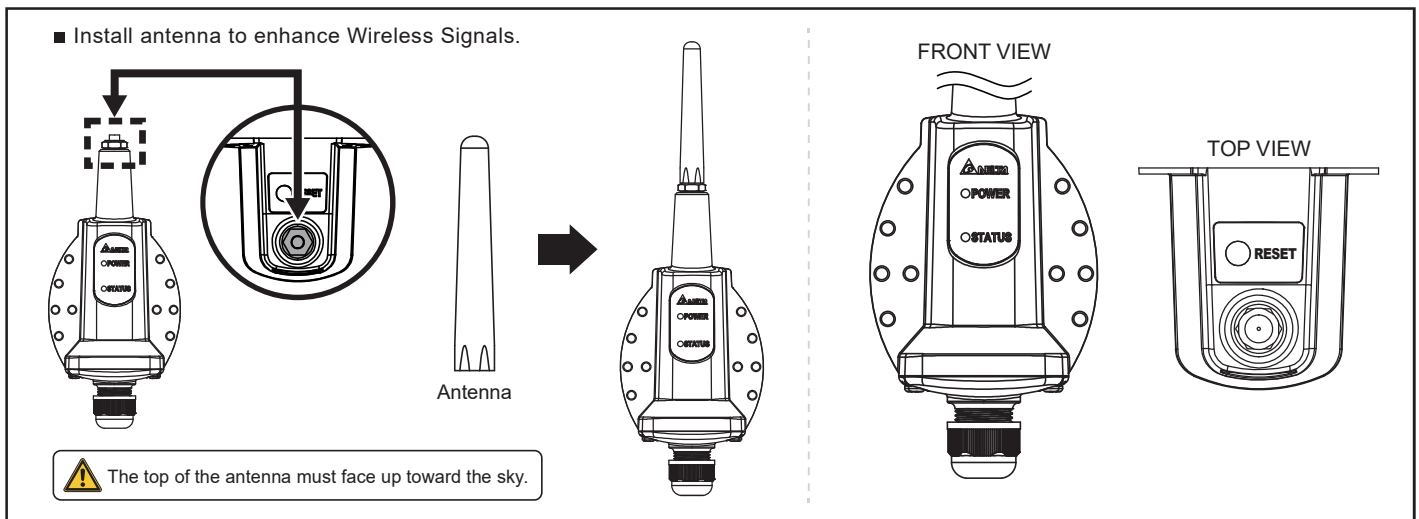
Appendix - PPM N2_WIFI

1. Functions of Parts

	Part	Function
①	Antenna	Wi-Fi Signal
②	Fixed Point	Fix on inverter
③	Reset Button	Reset to default
④	Power LED	Power ON/OFF
⑤	Status LED	Wi-Fi Status
⑥	Cable Gland	Avoid the moisture into machine



2. Wi-Fi Antenna



3. LED Description

	Action (Green LED)	Description
POWER	ON	When the device is receiving power.
	OFF	Powered off.

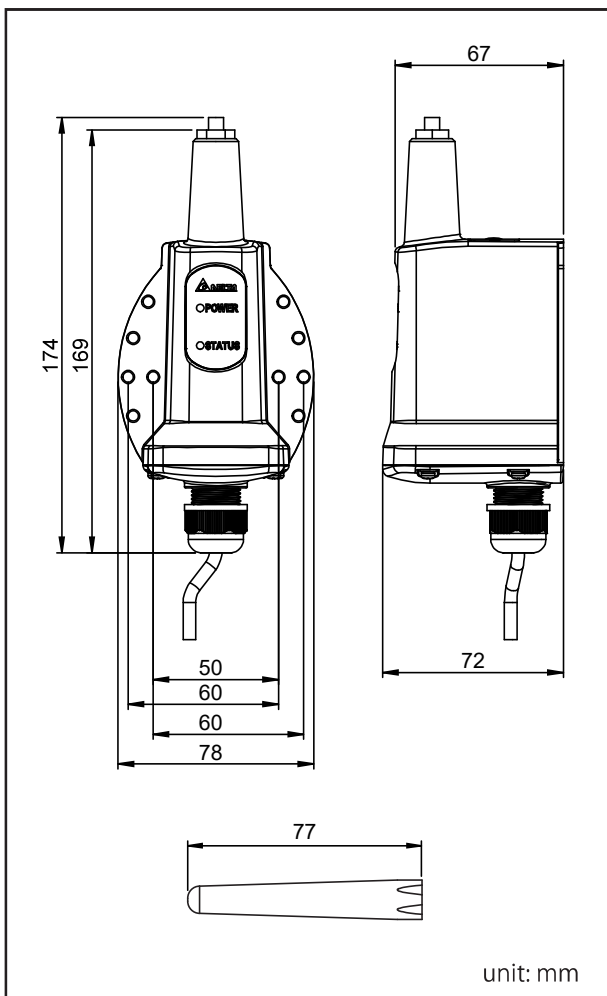
	Action (Green LED)	Description
STATUS	Flash : 3s On, 3s Off	Connected to WiFi router/DC1
	Flash : 3s Flash(100ms), 3s Off	Connected to both WiFi router/DC1 and mobile device
	Off	Not connected
	Steady On	Connected to mobile device
	Flash : 100ms On, 100ms Off	Connected to mobile device and transferring data
	Flash : 500ms On, 500ms Off	Reboot Wi-Fi (Press Button 3~10s)
	Flash : 1s On, 1s Off	Reset Password & Reset Wi-Fi Settings (Press Button 20~30s)

Reset Button	Wi-Fi LED Status	Description
Push 3s~10s	Wi-Fi LED flashing once every half a second	Reset Wi-Fi module
Push 10s~20s	No flash	No function
Push 20s~	Wi-Fi LED flashing once every one seconds	Reset Wi-Fi module, and Wi-Fi password returns to the default: DELTASOL

4. Specifications

ELECTRONIC SPEC		PPM N2_WIFI
Operating voltage range	12 Vdc ~ 36 Vdc	
Max. Power Consumption	3 Watt	
COMMUNICATION		
Wired	RS-485	
Wireless	Wi-Fi	
REGULATION		
Emission (EMI)	EN 300 220 (below 1G), EN 50385, LP0002, Part 15C, Telec T66, EN 300 328, LP0002, FCC Part15.247, KC	
CONNECTION		
I/O Port	2 pin terminal block for RS-485	
GENERAL INFORMATION		
LED Display	POWER, STATUS	
Operation temperature	-25°C ~ 60°C	
Relative humidity	30% ~ 85%	
Dimension (WxHxD)	78 x 246 x 72mm	
Weight	150g	

5. Dimensions



6. Wi-Fi Module

Name	Explanation
Wireless Protocols	IEEE 802.11b, 802.11g, 802.11n
WLAN Bandwidth	20 MHz / 40 MHz
WLAN Data Rates	802.11b: 1, 2, 5.5, 11 Mbps 802.11g: 6, 9, 12, 18, 24, 36, 48, 54 Mbps 802.11n: MCS0 to MCS7 with and without Short GI
WLAN Operating Frequency Range	2412 MHz – 2472 MHz
WLAN Modulation	OFDM with BPSK, QPSK, 16-QAM, and 64-QAM 802.11b with CCK and DSSS
WLAN Transmit Power	17 dBm
WLAN Receive	-97 dBm

7. Installation & Communication Wiring

